

## Mouse Semaphorin 7A / SEMA7A ELISA Kit

**SKU: MOFI01102**

### Datasheet:

#### Key features and Sample Types

**Aliases:**

SEMA7A/CD108/H-Sema-L/Sema7A/SEMA7A/SEMAL/CD108 antigen/CD108MGC126696/CDW108/CDw108/H-SEMA-K1/H-Sema-L/JMH/JMH blood group antigen/John-Milton-Hagen human blood group Ag/sema domain immunoglobulin domain(Ig) and GPI membrane anchor(semaphorin)7A/sema domain immunoglobulin domain(Ig) and GPI membrane anchor(semaphorin)7A(JMH blood group)/sema domain immunoglobulin domain(Ig) and GPI membrane anchor 7A/Sema K1/Sema L/SEMAK1/SEMALJohn Milton Hagen blood group H-Sema K1/semaphorin 7A GPI membrane anchor(John Milton Hagen blood group)/semaphorin K1/semaphorin L/semaphorin-7A/semaphorin-K1/Semaphorin-K1/semaphorin-L/Semaphorin-L

**Uniprot:**

Q9QUR8

**Detection method:**

Sandwich

**Sample Type:**

Serum, Plasma and other biological fluids

**Range:**

0.313-20ng/ml

**Sensitivity:**

0.188 ng/ml

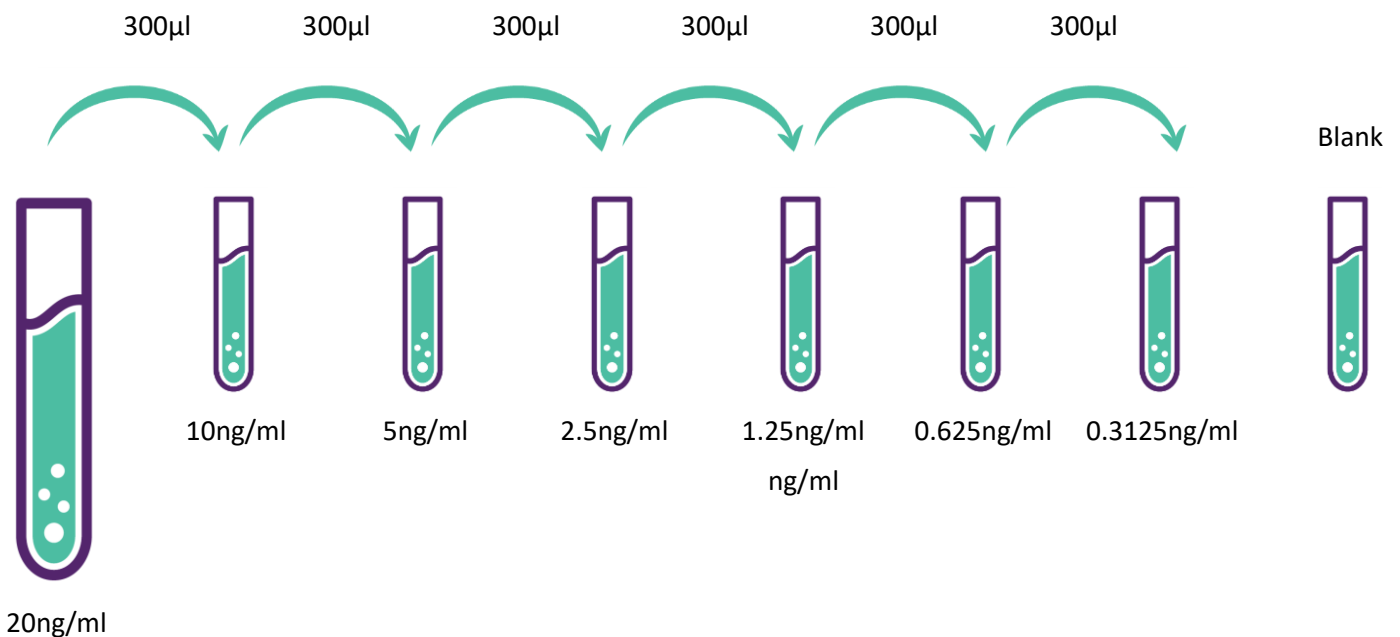
## Storage & Expiry

ELISA Genie ELISA Kits are shipped on ice packs. Please store this ELISA Kit at 4°C. Date of expiration will be on the ELISA Box label.

## Standard dilution

- 1). 20ng/ml of standard solution: Add 1 ml of Sample / Standard dilution buffer into one Standard tube, keep the tube at room temperature for 10 min and mix thoroughly.
- 2). 20ng/ml --> 0.3125ng/ml of standard solutions: Label 6 Eppendorf tubes with 10ng/ml, 5ng/ml, 2.5ng/ml, 1.25ng/ml, 0.625ng/ml, 0.3125ng/ml, respectively. Aliquot 300µl of the Sample / Standard dilution buffer into each tube. Add 300µl of the above 20ng/ml standard solution into 1st tube and mix thoroughly. Transfer 300µl from 1st tube to 2nd tube and mix thoroughly. Transfer 300µl from 2nd tube to 3rd tube and mix thoroughly, and so on.

### DILUTION SERIES



**Note: The standard solutions are best used within 2 hours. The standard solution series should be kept at 4°C for up to 12 hours. Or store at -20 °C for up to 48 hours. Avoid repeated freeze-thaw cycles.**

## Typical Data & Standard Curve

Results of a typical standard run of Mouse Semaphorin 7A / SEMA7A ELISA Kit are shown below. This standard curve was generated at our lab for demonstration purpose only. Each user should obtain their own standard curve as per experiment.

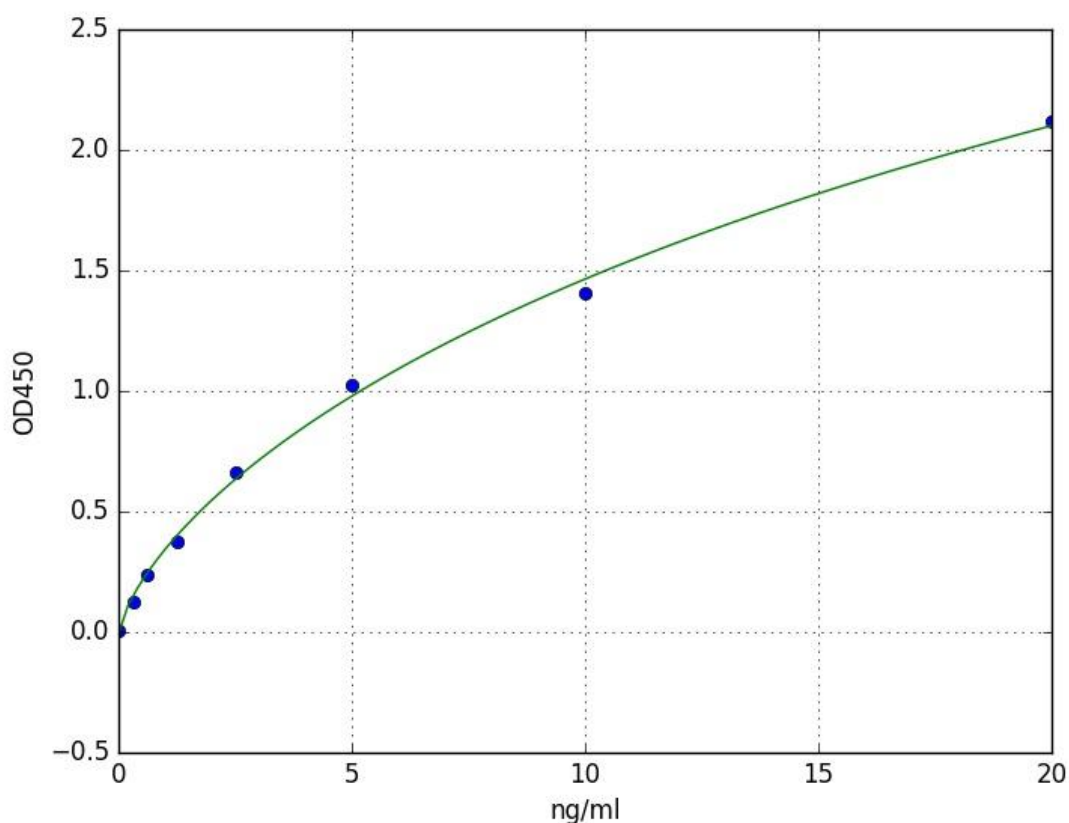
## Specificity

This assay has high sensitivity and excellent specificity for detection of Mouse Semaphorin 7A / SEMA7A. No significant cross-reactivity or interference between Mouse Semaphorin 7A / SEMA7A and analogues was observed.

## Recovery

Matrices listed below were spiked with Mouse Semaphorin 7A / SEMA7A and the recovery rates were calculated by comparing the measured value to the expected amount of Mouse Semaphorin 7A / SEMA7A in samples.

<b>Matrix</b>	<b>Recovery range (%)</b>	<b>Average (%)</b>
<b>Serum (n=5)</b>	86-104	92
<b>EDTA plasma (n=5)</b>	91-101	97
<b>UFH plasma (n=5)</b>	92-98	95



## Linearity

The linearity of the kit was assayed by testing samples spiked with appropriate concentration of Mouse Semaphorin 7A / SEMA7A and their serial dilutions.

Sample	1:2	1:4	1:8	1:16
Serum (n=5)	85-99%	86-102%	93-102%	93-99%
EDTA plasma (n=5)	93-101%	91-98%	82-98%	82-101%
UFH plasma (n=5)	81-94%	86-99%	81-98%	84-98%

## Precision

- **Intra-assay Precision (Precision within an assay):** 3 samples with low, middle and high level Mouse Semaphorin 7A / SEMA7A were tested 20 times on one plate, respectively.
- **Inter-assay Precision (Precision between assays):** 3 samples with low, middle and high level Mouse Semaphorin 7A / SEMA7A were tested on 3 different plates, 8 replicates in each plate.
- **CV (%):**  $SD/mean \times 100$
- **Intra-Assay:** CV<8%
- **Inter-Assay:** CV<10%

## Stability

The stability of the Mouse Semaphorin 7A / SEMA7A ELISA Kit is determined by the loss rate of activity. The loss rate of this kit is less than 10% within the expiration date under appropriate storage conditions.

Standard (n=5)	37°C for 1 month	4°C for 6 months
Average (%)	80	95-100

To minimize extra influence on the performance, operation procedures and lab conditions, especially room temperature, air humidity, incubator temperature should be strictly controlled. It is also strongly suggested that the whole assay is performed by the same operator from the beginning to the end.

### Contact Details:

Reagent Genie

G1, The Steelworks

Foley Street

Dublin, Ireland

**Email:** [info@elisagenie.com](mailto:info@elisagenie.com)

**Web:** [www.elisagenie.com](http://www.elisagenie.com)